

---

# **Muscle BioAmp Shield**

**Upside Down Labs**

**Jul 25, 2025**

# CONTENTS

<b>1</b>	<b>Muscle BioAmp Shield</b>	<b>1</b>
1.1	Overview	1
1.2	Features & Specifications	2
1.3	Hardware	2
1.4	Contents of the kit	4
1.5	Software requirements	4
1.6	Using the Sensor	7
1.6.1	Step 1: Stack on Arduino Uno	7
1.6.2	Step 2: Connecting Electrode Cable	7
1.6.3	Step 3: Skin Preparation	8
1.6.4	Step 4: Electrode Placements	8
1.6.5	Step 5: Connect Arduino UNO to your laptop	9
1.6.6	Step 6: Visualise EMG signals on laptop	10
1.6.7	Step 7: Visualise EMG signals on LEDs	11
1.6.8	Step 8: Listen to your EMG signals	11
1.6.9	Step 9: Controlling a servo motor	13
1.6.10	Step 10: Controlling a servo claw	13
1.6.11	Step 11: Connecting 9V battery	13
1.6.12	Step 12: Other functionalities you can explore	14
<b>2</b>	<b>Skin Preparation Guide</b>	<b>16</b>
2.1	Why skin preparation is important?	16
2.2	Kit Contents	16
2.3	Steps to follow	17
2.3.1	Step 1: Identify the targeted area	17
2.3.2	Step 2: Apply NuPrep gel	17
2.3.3	Step 3: Clean the skin surface	17
2.3.4	Step 4: Wipe off the gel	21
2.3.5	Step 5: Measuring the signals	21
<b>3</b>	<b>Using BioAmp Bands</b>	<b>24</b>
3.1	Overview	24
3.2	Why use BioAmp Bands?	24
3.3	Types of BioAmp Bands	24
3.3.1	1. Muscle BioAmp Band	25
3.3.2	2. Heart BioAmp Band	25
3.3.3	3. Brain BioAmp Band	26
3.4	Using Muscle BioAmp Band	27
3.4.1	Assembly	27
3.4.2	Skin Preparation	29
3.4.3	Measure EMG	29
3.5	Using Heart BioAmp Band	31
3.5.1	Skin Preparation	31
3.5.2	Assembly	31



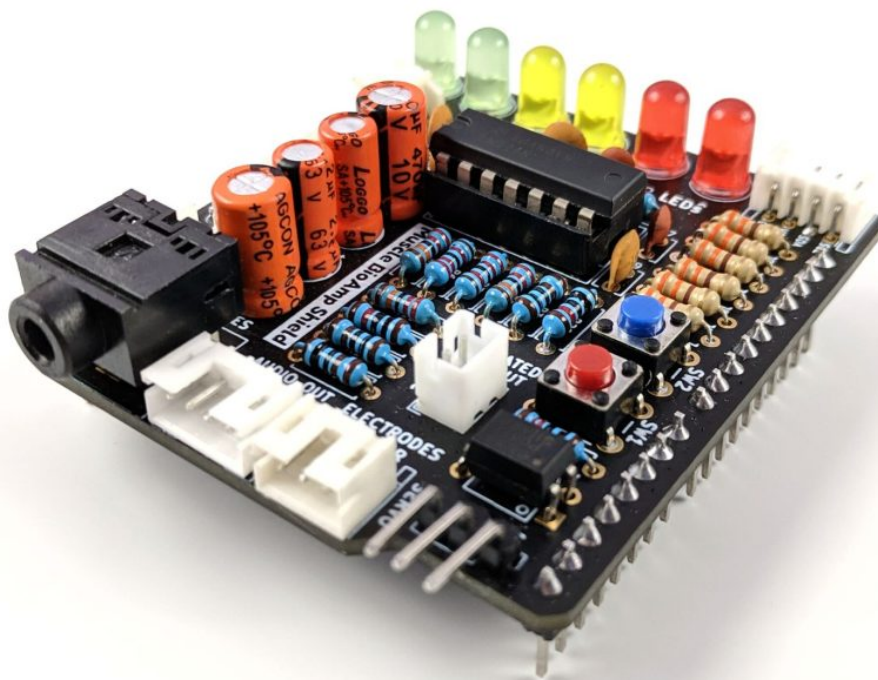
3.5.3	Measure ECG . . . . .	33
3.6	Using Brain BioAmp Band . . . . .	34
3.6.1	Assembly . . . . .	34
3.6.2	Skin Preparation . . . . .	34
3.6.3	Measure 1-channel EEG . . . . .	34

## MUSCLE BIOAMP SHIELD

v0.3

### 1.1 Overview

Muscle BioAmp Shield is an all-in-one Arduino Uno ElectroMyography (EMG) shield for learning neuroscience with ease which is inspired from BackYard Brains (BYB) [Muscle Spiker shield](#) and provides similar features like hobby servo output, user buttons, LED Bar, Audio output, and battery input. It is perfect for beginners as they can easily stack it on top of Arduino Uno to record, visualize and listen to their muscle signals to make amazing projects in the domain of Human-Computer Interface (HCI).



## 1.2 Features & Specifications

Muscle BioAmp Shield comes with various plug-and-play options so you can connect hundreds of extension boards like OLED screens, character displays, accelerometers, and servo controllers to name just a few using the STEMMA I2C interface. You also get STEMMA digital and STEMMA analog ports. On STEMMA analog port you can connect additional BioAmp EXG Pill or any other sensor with analog output. On STEMMA digital port you can connect any digital sensor or actuator of your choice.

Input Voltage	5V
Input Impedance	$10^{11}$ ohm
Fixed Gain	x2420
Bandpass filter	72 – 720 Hz
Compatible Hardware	Arduino UNO
BioPotentials	EMG (Electromyography)
No. of channels	1
Electrodes	3 (Positive, Negative, and Reference)
Dimensions	6.0 x 5.3 cm
Open Source	Hardware + Software

## 1.3 Hardware

Images below shows a quick overview of the hardware design.

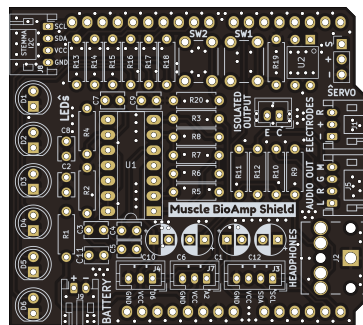


Fig. 1: PCB Front

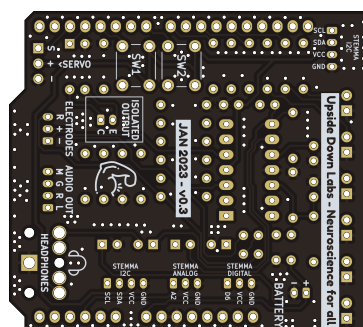


Fig. 2: PCB Back

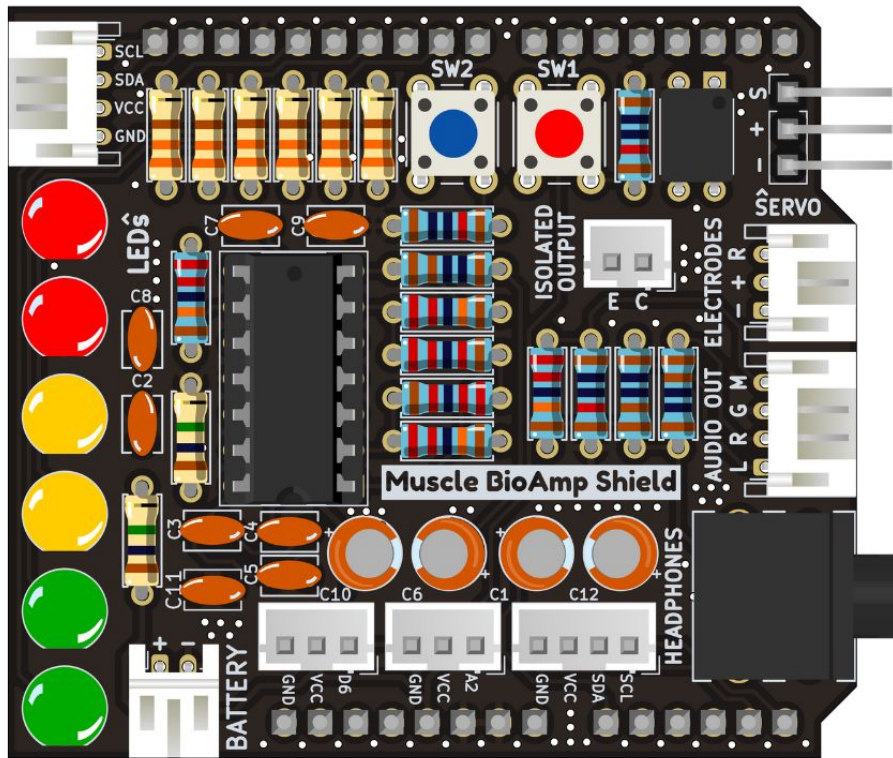


Fig. 3: Assembled PCB

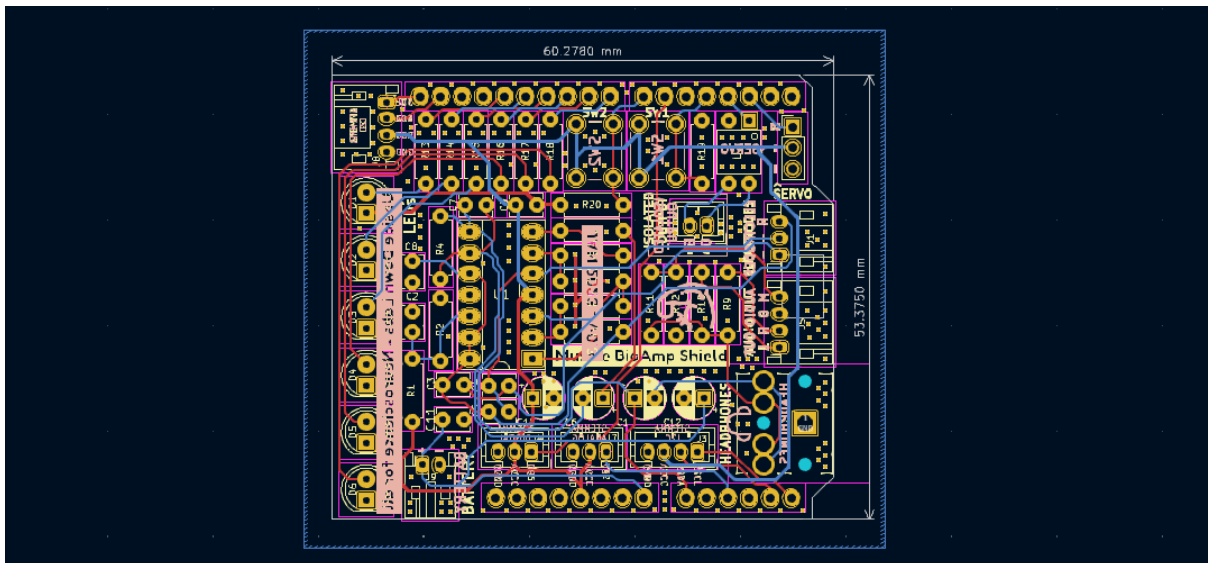


Fig. 4: PCB Layout

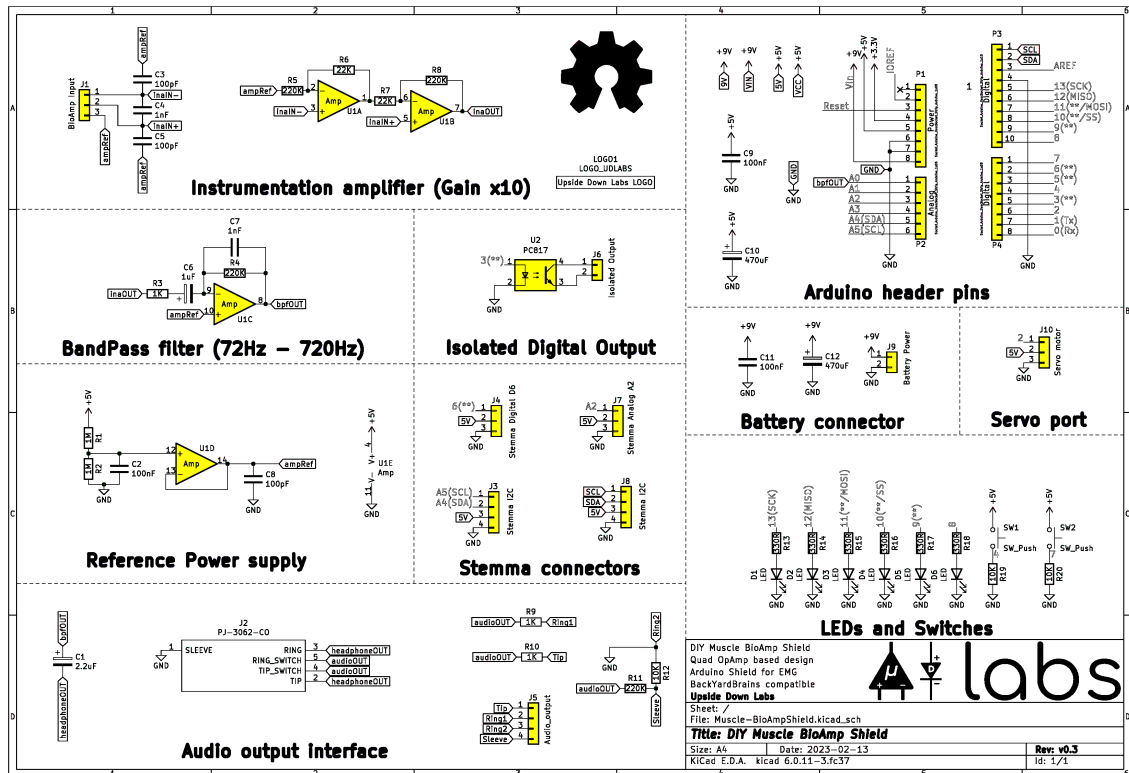


Fig. 5: Schematic Diagram

## 1.4 Contents of the kit

There are 2 variants available for Muscle BioAmp Shield v0.3 kit - one comes with the shield assembled and the other one contains bare PCB of the sensor and the components separately which you can assemble pretty easily.

Click on the link below to see the unboxing of the kit:

<https://youtu.be/w8yw12Sue6Q>

## 1.5 Software requirements

Before you start using the kit, please download [Arduino IDE v1.8.19 \(legacy IDE\)](#). Using this you'll be able to upload the arduino sketches on your development board and visualise the data on your laptop.

Visit Upside Down Labs [Chords Web](#) to visualize your biosignals directly in the browser.

**Getting started with Chords Web**

<https://youtu.be/IVIPnk9z75g>

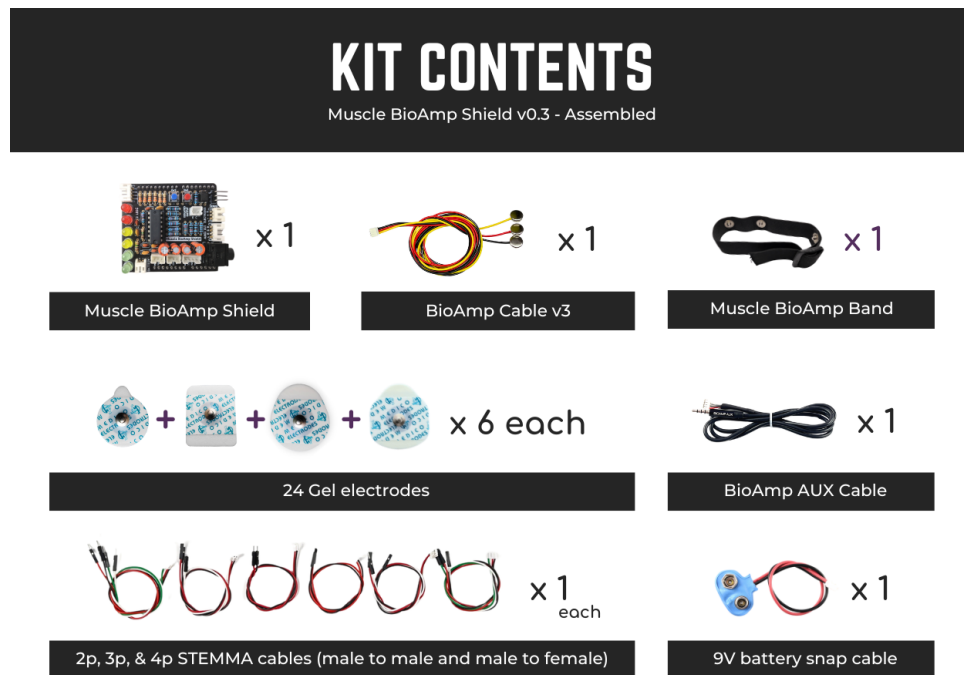


Fig. 6: Assembled Muscle BioAmp Shield kit content

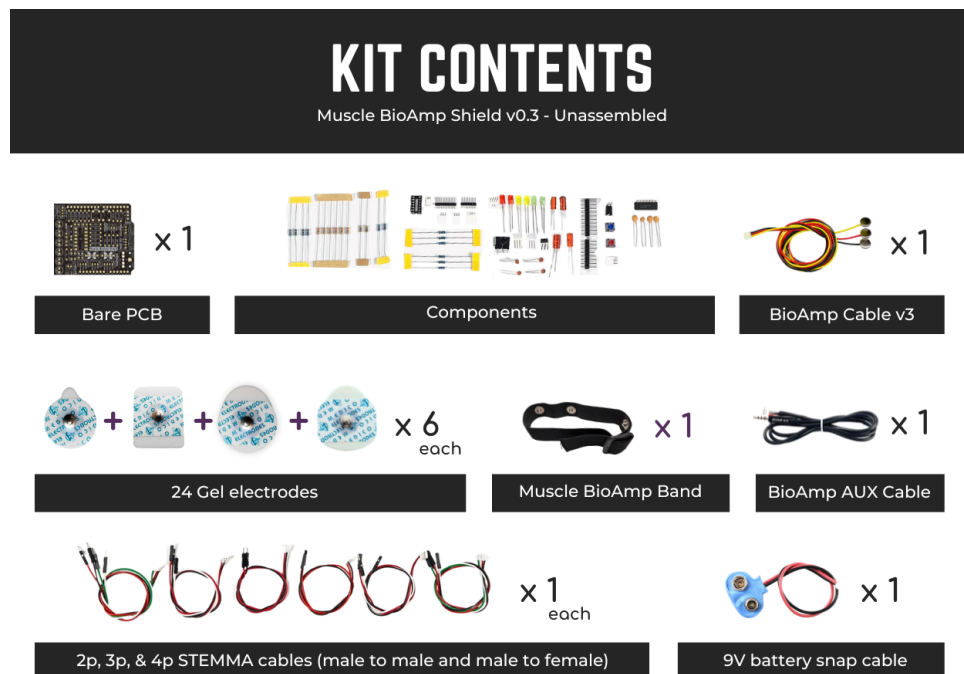


Fig. 7: Unassembled Muscle BioAmp Shield kit content

### Legacy IDE (1.8.X)



The screenshot shows the Arduino IDE 1.8.19 download page. On the left, there's a section with the Arduino logo and the title "Arduino IDE 1.8.19". Below the title, it says: "The open-source Arduino Software (IDE) makes it easy to write code and upload it to the board. This software can be used with any Arduino board." Further down, it says: "Refer to the [Arduino IDE 1.x documentation](#) for installation instructions." Below that, there's a "SOURCE CODE" section: "Active development of the Arduino software is [hosted by GitHub](#). See the instructions for [building the code](#). Latest release source code archives are available [here](#). The archives are PGP-signed so they can be verified using [this](#) gpg key."

On the right, there's a "DOWNLOAD OPTIONS" section. It lists: "Windows Win 7 and newer", "Windows ZIP file", "Windows app Win 8.1 or 10" with a "Get" button, "Linux 32 bits", "Linux 64 bits", "Linux ARM 32 bits", "Linux ARM 64 bits", and "Mac OS X 10.10 or newer". At the bottom of this section, there are links for "Release Notes" and "Checksums (sha512)".

Fig. 8: Arduino IDE v1.8.19 (legacy IDE)

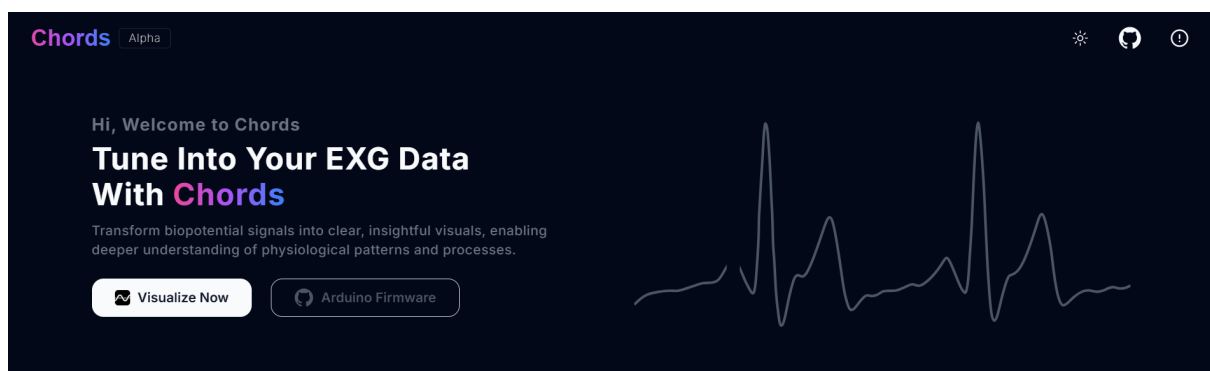


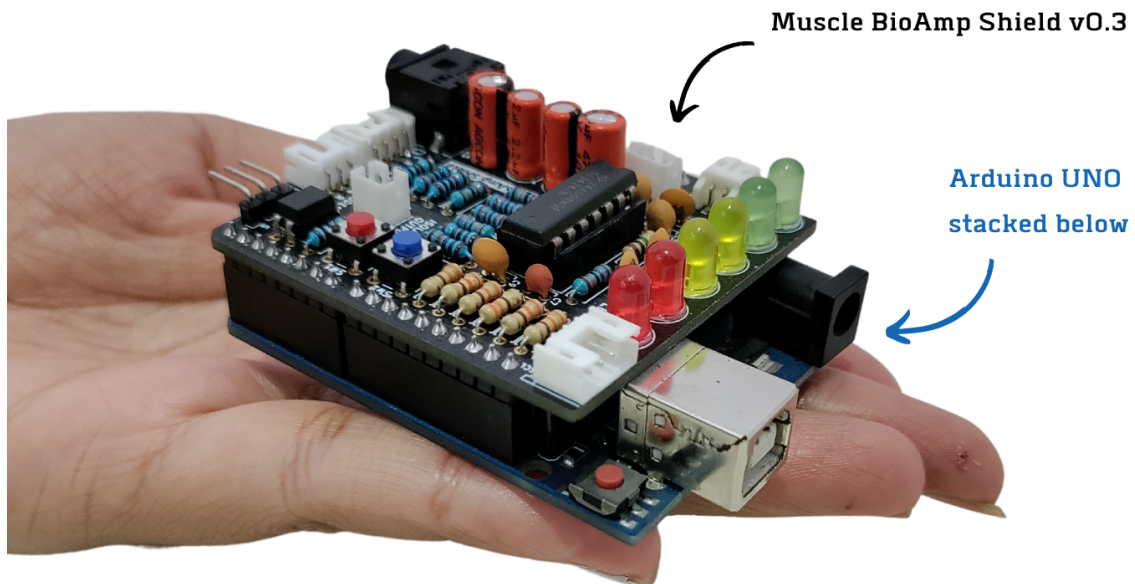
Fig. 9: Chords Web Landing Page



## 1.6 Using the Sensor

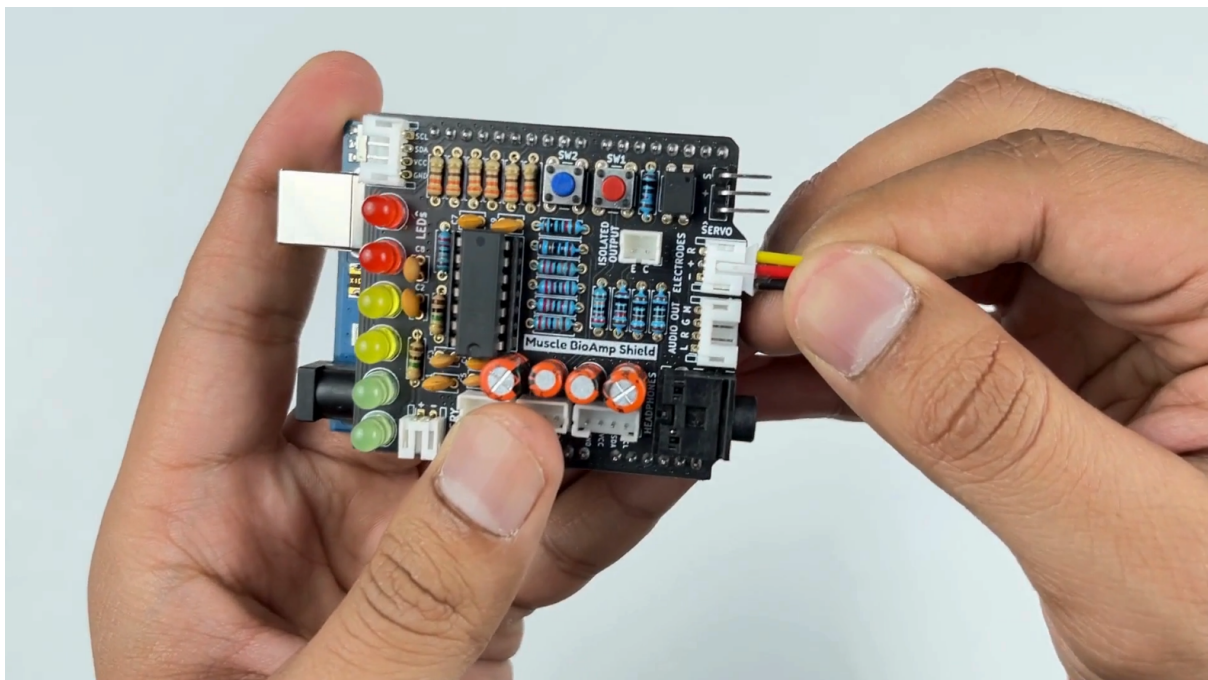
### 1.6.1 Step 1: Stack on Arduino Uno

Stack the Muscle BioAmp Shield on top of Arduino Uno properly.



### 1.6.2 Step 2: Connecting Electrode Cable

Connect the BioAmp Cable to Muscle BioAmp Shield as shown.





### 1.6.3 Step 3: Skin Preparation

Apply Nuprep Skin Preparation Gel on the skin surface where electrodes would be placed to remove dead skin cells and clean the skin from dirt. After rubbing the skin surface thoroughly, clean it with an alcohol wipe or a wet wipe.

For more information, please check out detailed step by step [Skin Preparation Guide](#).

### 1.6.4 Step 4: Electrode Placements

We have 2 options to measure the EMG signals, either using the gel electrodes or using dry electrode based Muscle BioAmp Band. You can try both of them one by one.

#### Using gel electrodes

1. Connect the BioAmp cable to gel electrodes,
2. Peel the plastic backing from electrodes
3. Place the IN+ and IN- cables on the arm near the ulnar nerve & REF (reference) at the back of your hand as shown in the connection diagram.

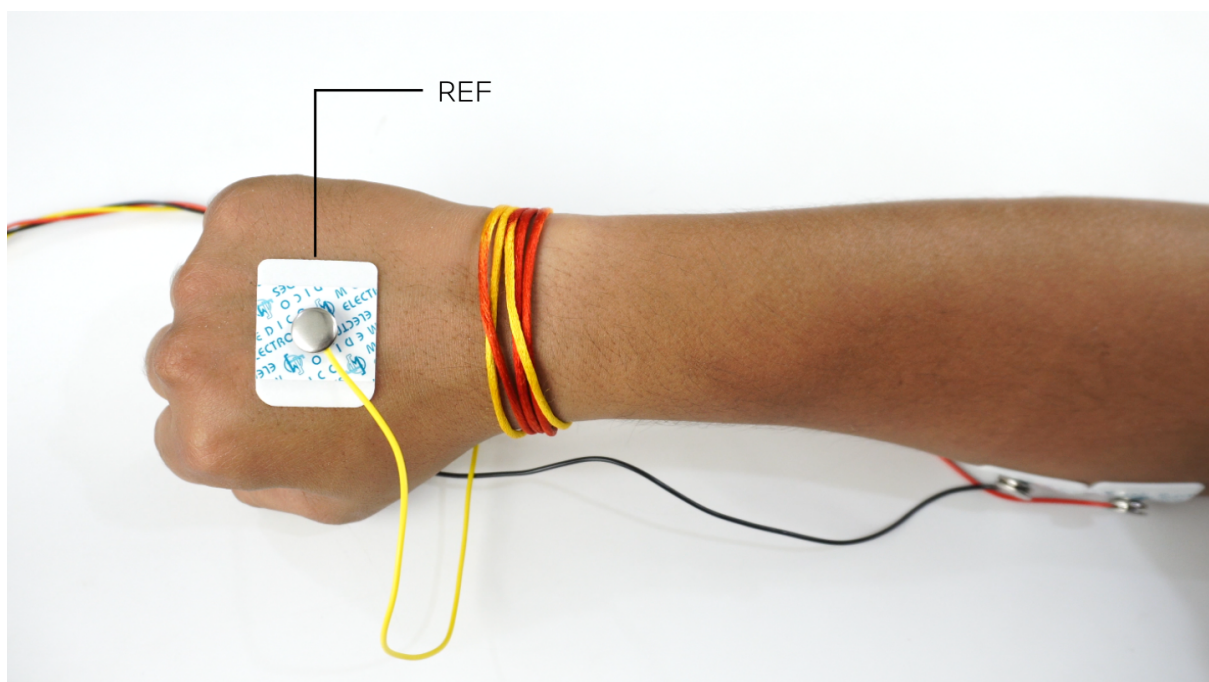


Fig. 10: *Electrode placement for REF cable*

#### Using Muscle BioAmp Band

1. Connect the BioAmp cable to Muscle BioAmp Band in a way such that IN+ and IN- are placed on the arm near the ulnar nerve & REF (reference) on the far side of the band.
2. Now put a small drop of electrode gel between the skin and metallic part of BioAmp cable to get the best results.

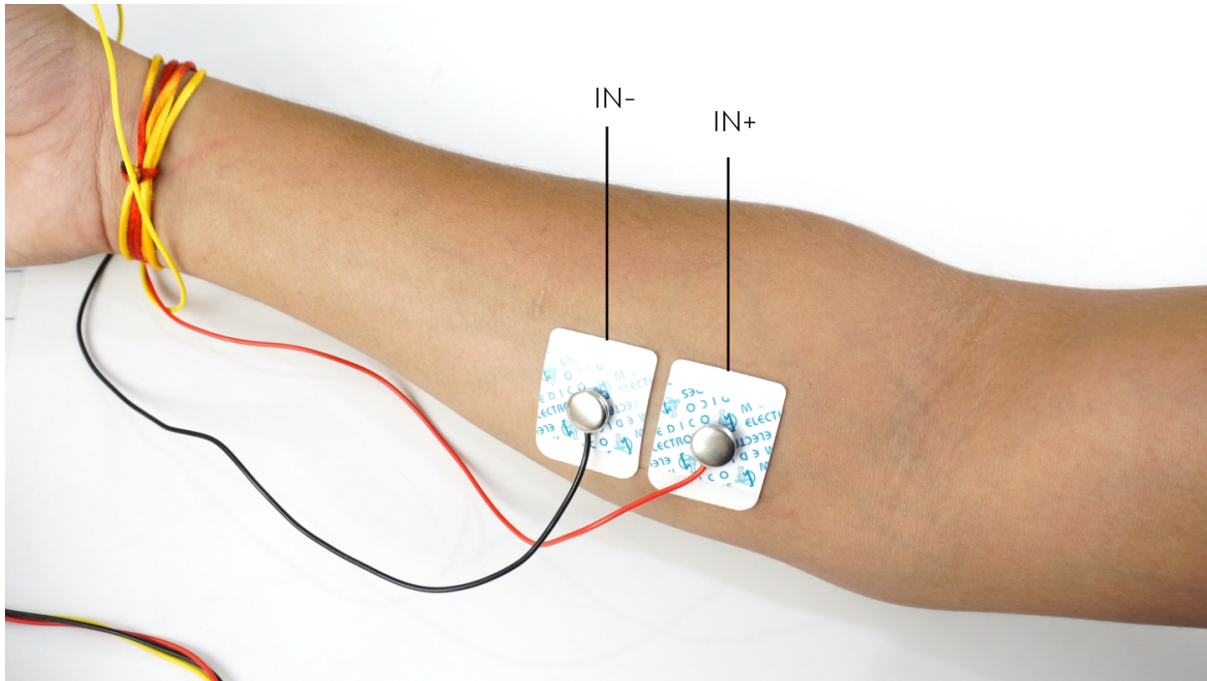


Fig. 11: *Electrode placement for IN+, IN- cables*

#### Tip

Visit the complete documentation on how to *assemble and use the BioAmp Bands* or follow the youtube video given below.

**Tutorial on how to use the band:**

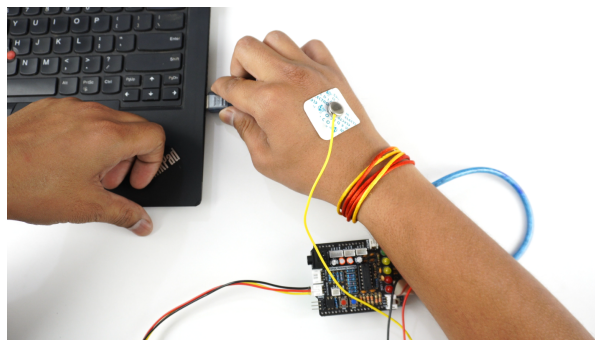
<https://youtu.be/xYZdw0aesa0>

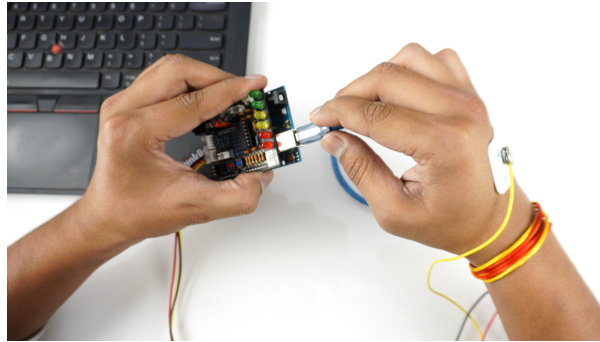
#### Note

In this demonstration we are recording EMG signals from the ulnar nerve, but you can record EMG from other areas as well (biceps, triceps, legs, jaw etc) as per your project requirements. Just make sure to place the IN+, IN- electrodes on the targeted muscle and REF on a bony part.

### 1.6.5 Step 5: Connect Arduino UNO to your laptop

Connect your Arduino UNO R3 to your laptop using the USB cable (Type A to Type B).





### Warning

Make sure your laptop is not connected to a charger and sit 5m away from any AC appliances for best signal acquisition.

### 1.6.6 Step 6: Visualise EMG signals on laptop

Copy paste any one of the arduino sketches given below in Arduino IDE v1.8.19 that you downloaded earlier:

[EMG Filter](#)

[EMG Envelope](#)

For visualizing the EMG signals, use [Chords Web](#) for quick and hassle free real-time biosignal visualization right from your browser, without installing any software.

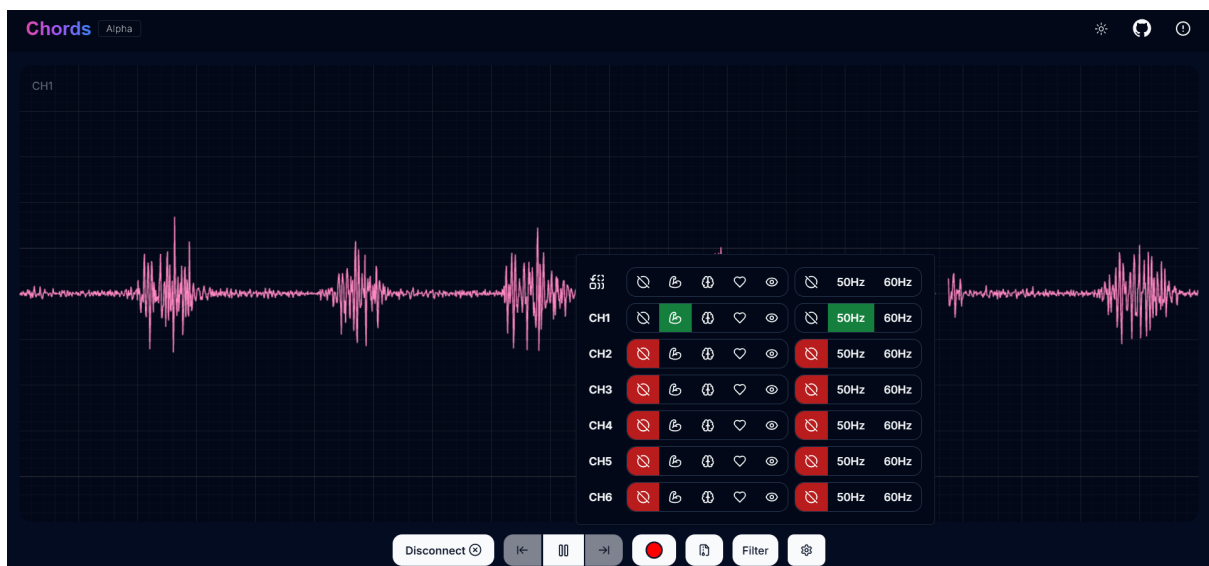


Fig. 12: Visualizing EMG signals on Chords Web

You can also use Arduino IDE's Serial Plotter to visualize the signal:

Go to **tools** from the menu bar, select **board** option then select **Arduino UNO**. In the same menu, select the **COM** port on which your Arduino Uno is connected. To find out the right **COM** port, disconnect your board and reopen the menu. The entry that disappears should be the right **COM** port. Now upload the code, & open the serial plotter from the **tools** menu to visualize the EMG signals.

After opening the serial plotter make sure to select the baud rate to 115200.

Now flex your arm to visualize the muscle signals in real time on your laptop.

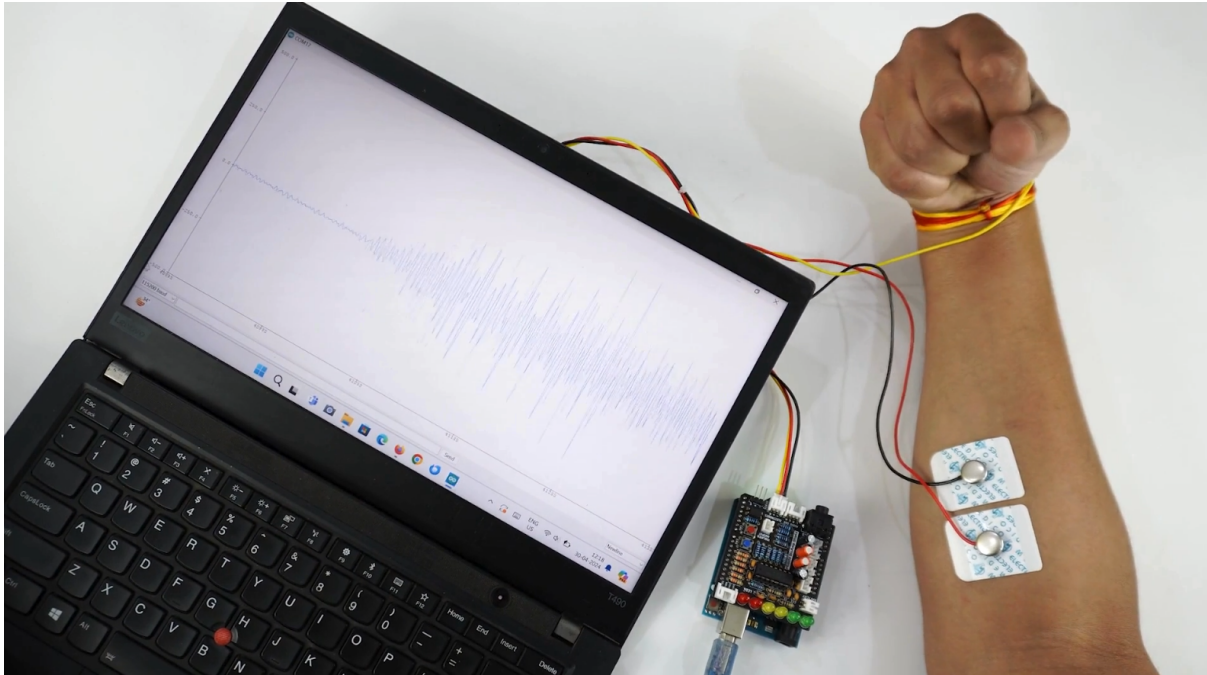


Fig. 13: Visualise EMG signals on laptop

### 1.6.7 Step 7: Visualise EMG signals on LEDs

Copy paste the Arduino Sketch given below in Arduino IDE:

#### LED Bar Graph

Make sure you have selected the right board and COM port. Now upload the code, and flex your arm. You'll see the LED bar going up. More strength you apply, more the LED bar goes up.

### 1.6.8 Step 8: Listen to your EMG signals

You can either listen to the muscle signals (EMG) on a speaker or wired earphones/headphones. Let's try both of them.

#### Listening EMG on speakers

1. Connect the BioAmp AUX cable on a bluetooth speaker that have 3.5mm jack support.
2. Switch on the speaker and turn the volume to maximum.
3. Flex and listen to your muscles.

#### Listening EMG on a wired earphones/headphones

1. Plug your wired earphones or headphones on the 3.5mm jack of BioAmp v1.5.
2. Plug it in your ears.
3. Flex and listen to your muscles.



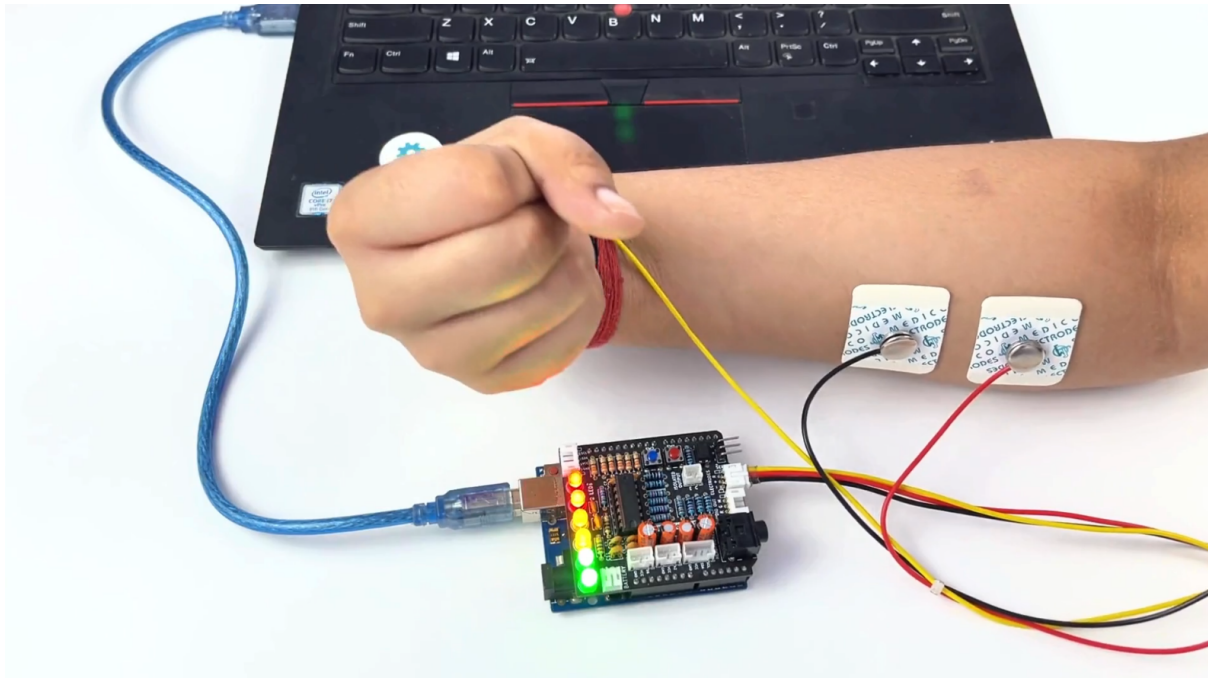


Fig. 14: Visualise EMG signals on LEDs

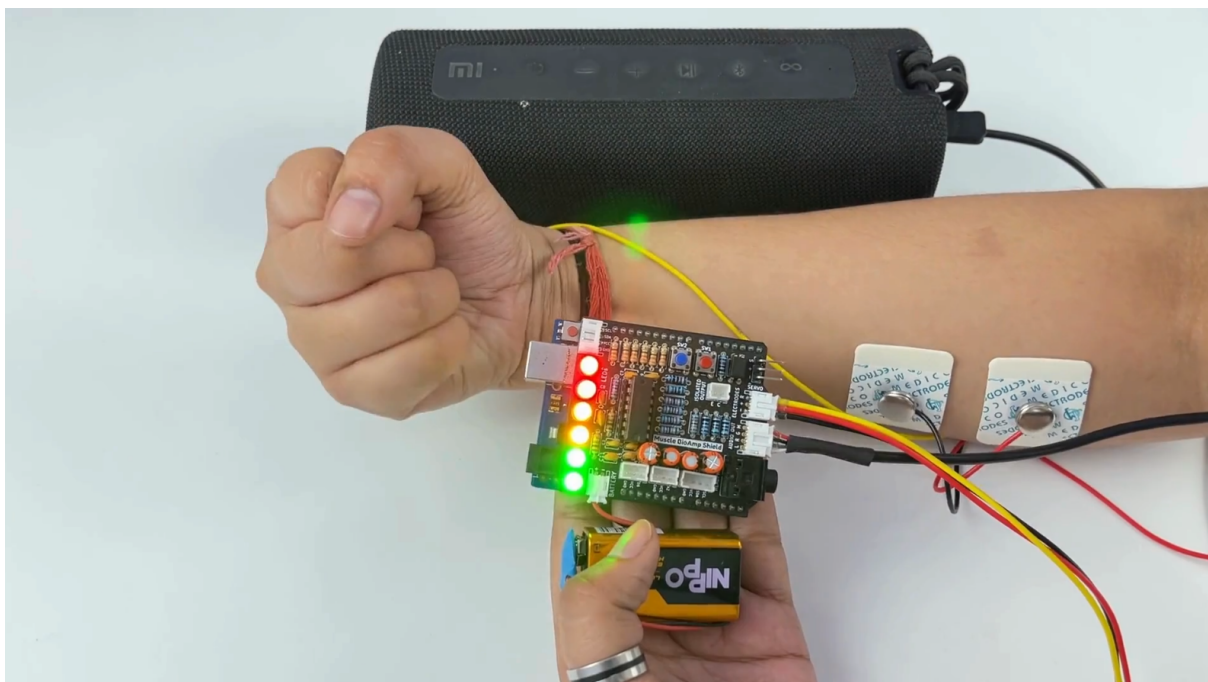


Fig. 15: Listening EMG on speakers

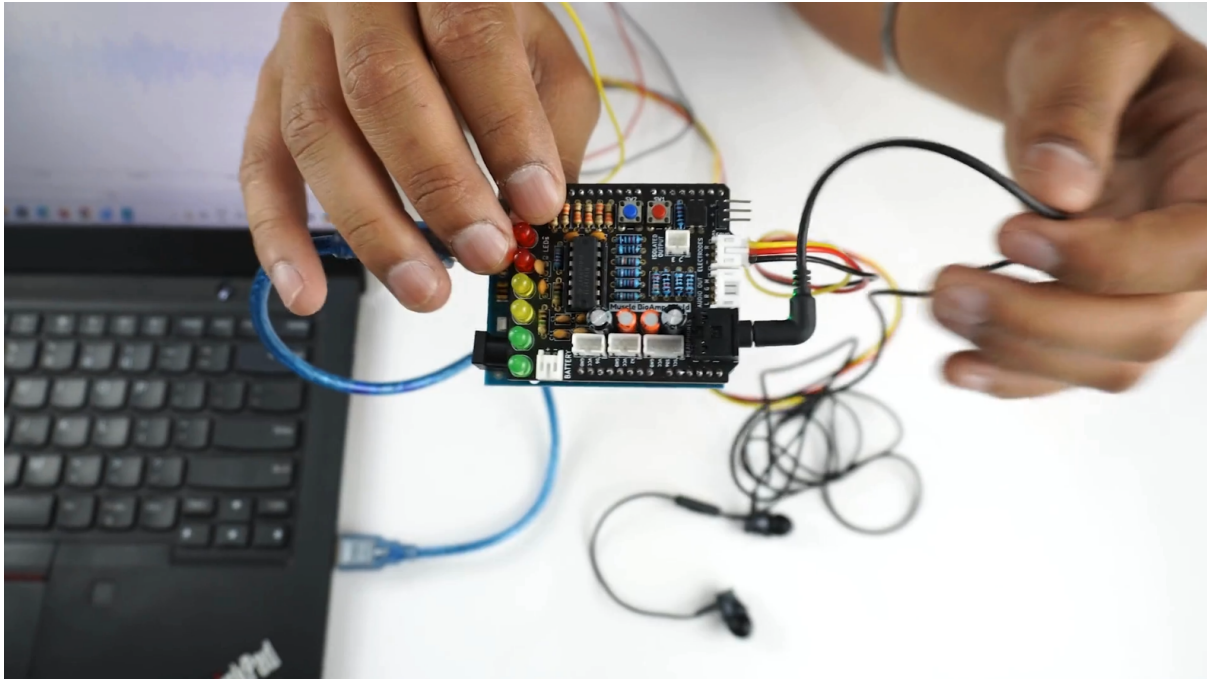


Fig. 16: *Listening EMG on a wired earphones/headphones*

### 1.6.9 Step 9: Controlling a servo motor

Connect the servo claw to Muscle BioAmp Shield.

Copy paste the Arduino Sketch given below in Arduino IDE:

[Servo Controller](#)

Make sure you have selected the right board and COM port. Now upload the code, and flex your arm to control the servo claw in real time.

### 1.6.10 Step 10: Controlling a servo claw

Connect the servo claw to Muscle BioAmp Shield.

Copy paste the Arduino Sketch given below in Arduino IDE:

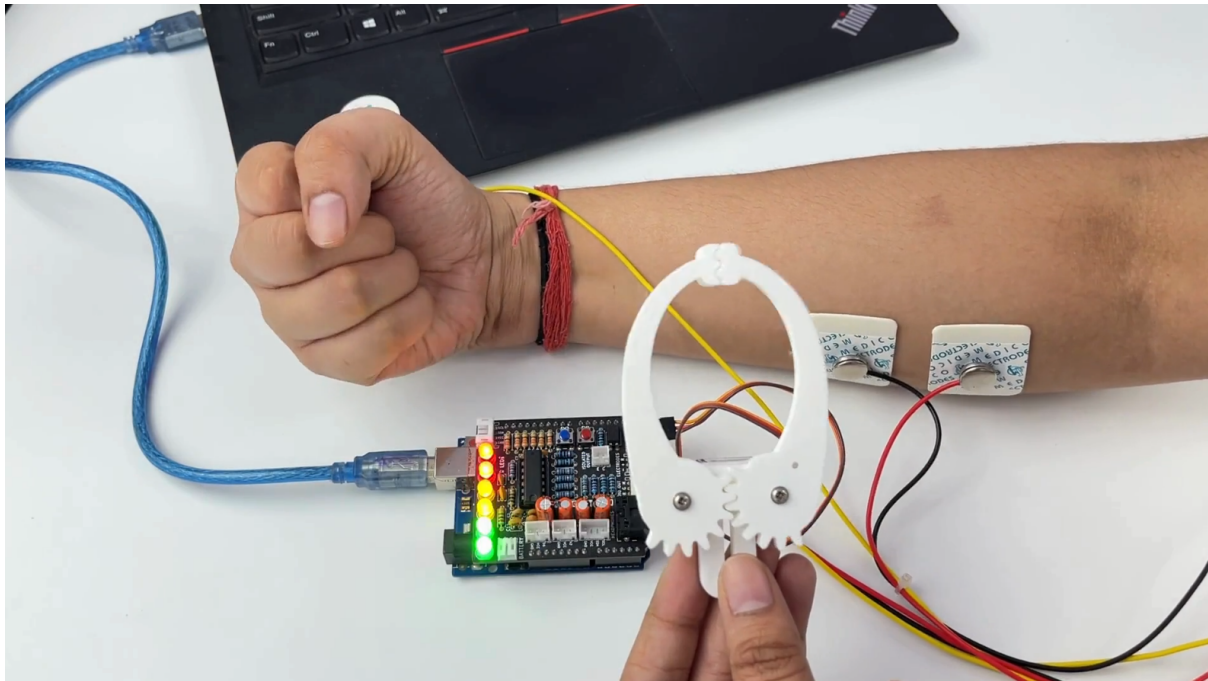
[Claw Controller](#)

Make sure you have selected the right board and COM port. Now upload the code, and flex your arm to control the servo claw in real time.

### 1.6.11 Step 11: Connecting 9V battery

Till now, the power for the EMG system was coming from the laptop via USB cable of Arduino Uno but there can be 2 ways in which you can make the system portable:

- **Using 9V battery:** Directly connect a 9V battery to Muscle BioAmp Shield using a 9V snap cable.
- **Using Power Bank:** Instead of connecting the USB cable of Arduino Uno to laptop, you can directly connect it to power bank.



### Note

Do not use 9V battery while controlling a servo claw using Muscle BioAmp Shield. Instead connect the Arduino UNO to a power bank or directly to your laptop.

## 1.6.12 Step 12: Other functionalities you can explore

### Using I2C ports

There are 2 I2C ports available on Muscle BioAmp Shield and you can connect hundreds of devices having I2C compatibility using the 4-pin JST PH 2.0 mm STEMMA cables provided.

Some of the examples are: OLED screens, character displays, temperature sensors, accelerometers, gyroscopes, light sensors, BioAmp Hardware, etc.

### Using STEMMA Digital port

Connect Arduino Uno's D6 digital I/O pins using STEMMA digital connectors.

### Using STEMMA Analog port

Connect Arduino Uno's A2 analog input pins using STEMMA analog connectors.

### Using user buttons

Program the 2 user buttons according to your project requirements.



## **SKIN PREPARATION GUIDE**

### **2.1 Why skin preparation is important?**

Proper skin preparation is crucial before recording any biopotential signal be it Electrocardiography (ECG), Electromyography (EMG), Electroencephalography (EEG), or Electrooculography (EOG).

- **Clean skin surface:** Removes dead skin cells, oils, & other substances that increases skin impedance.
- **Improve impedance:** Improves the conduction of electrical signals from the body to the recording equipment and minimizes impedance.
- **Electrode-skin contact:** Ensures optimal contact between the electrodes and the skin surface.
- **Signal quality:** Enhances the overall quality of recorded signals, providing clear & reliable data for analysis & improves the ability to capture subtle variations in biopotential signals.
- **Consistency in recordings:** Reduces variability in signal quality, making it easier to make any Human-Computer Interface (HCI), Brain-Computer Interface (BCI) project or a real-world application.
- **Long term adhesion:** Facilitates long-term adhesion & stable placement of electrodes to the skin during extended signal monitoring.

### **2.2 Kit Contents**

Nuprep gel	Mildly abrasive, highly conductive gel that should be applied before placing the electrodes on the skin to improve signal quality & enhances the performance of monitoring electrodes.
Electrode Gel	Highly conductive gel that acts as a coupling agent between dry electrodes and the skin to aid the transmission of biopotential signals like ECG, EMG, EOG, or EEG.
Ten20 paste	Contains the right balance of adhesiveness and conductivity, enabling the dry electrodes to remain in place while allowing the transmittance of biopotential signals.
Alcohol Swabs/Wet wipes	Soft & non-woven pads that helps in cleaning the skin surface and does not leave any residue.
Cotton Swabs	Useful while applying nuprep gel or ten20 paste.

# Contents of the kit



NuPrep Gel



Cotton Swabs



Electrode Gel



Alcohol Swabs



Ten20 Paste

## 2.3 Steps to follow

You can follow the steps given below to do the skin preparation properly:

### 2.3.1 Step 1: Identify the targeted area

Identify the target area where the gel electrodes or BioAmp Bands will be placed for recording the biopotential signals.

### 2.3.2 Step 2: Apply NuPrep gel

Take a small amount of NuPrep gel using a cotton swab and apply it on your targeted area.

### 2.3.3 Step 3: Clean the skin surface

Use gentle, circular motions to rub the gel on the skin surface. This removes all the dead skin cells & improves conductivity.

#### Warning

Do not rub the gel for too long as it has abrasive properties and may cause skin redness and irritation.

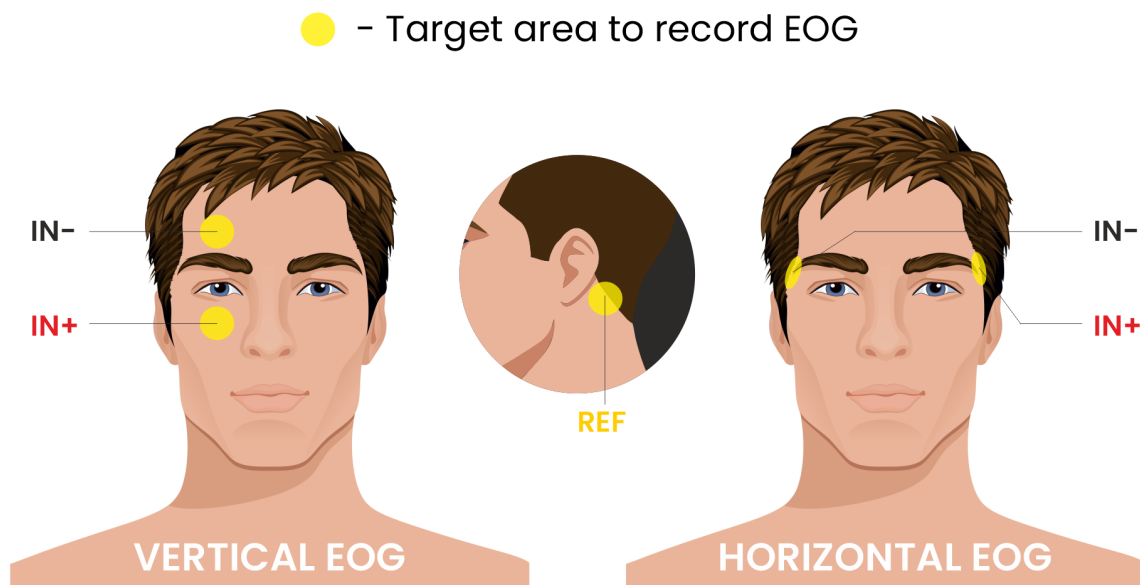


Fig. 1: Target area to record EOG

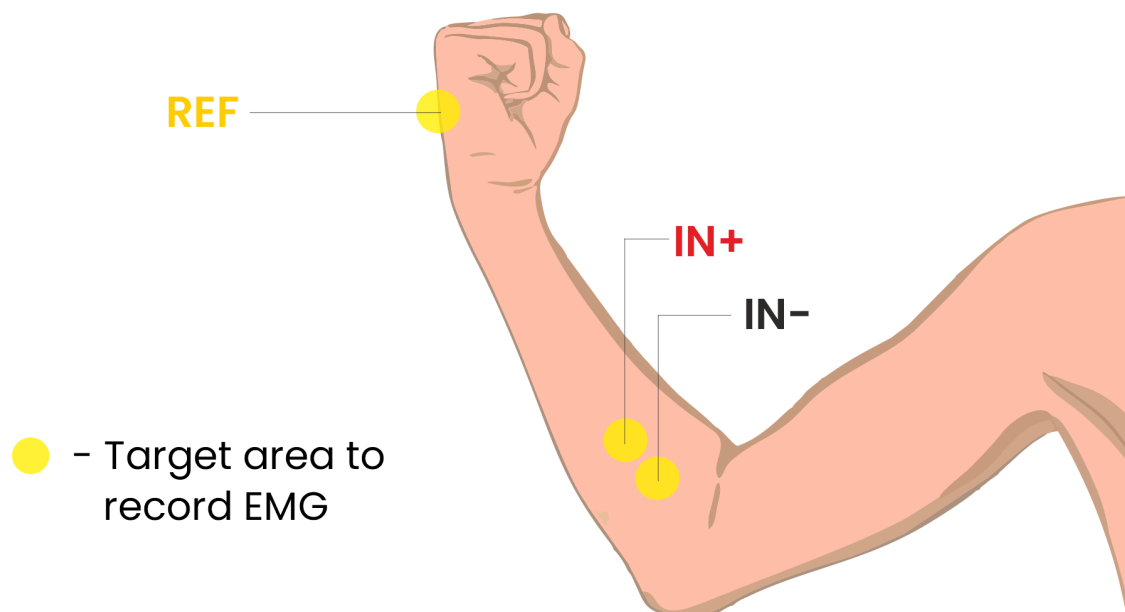


Fig. 2: Target area to record EMG

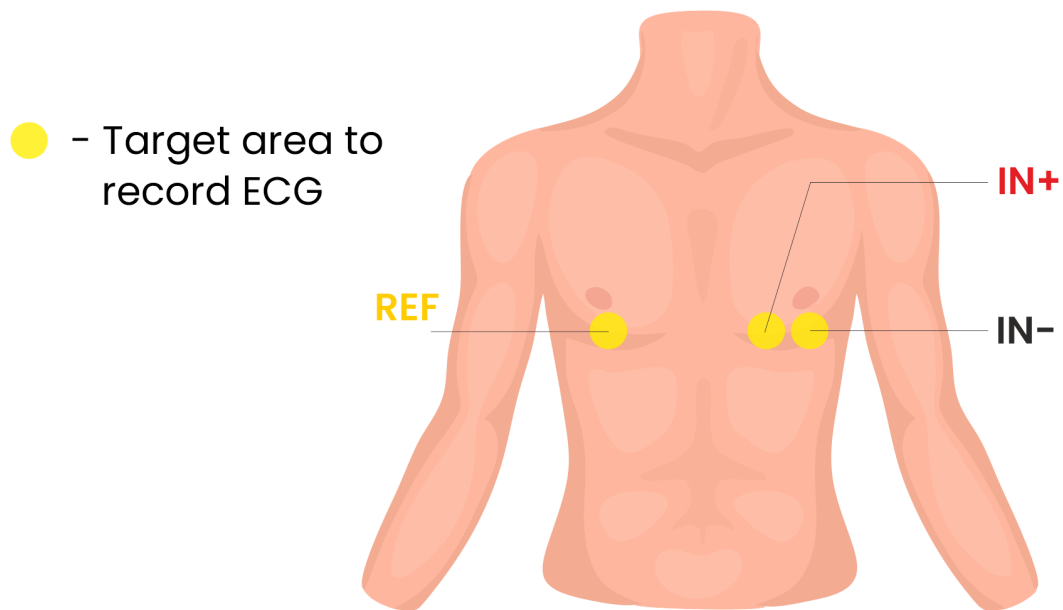


Fig. 3: Target area to record ECG

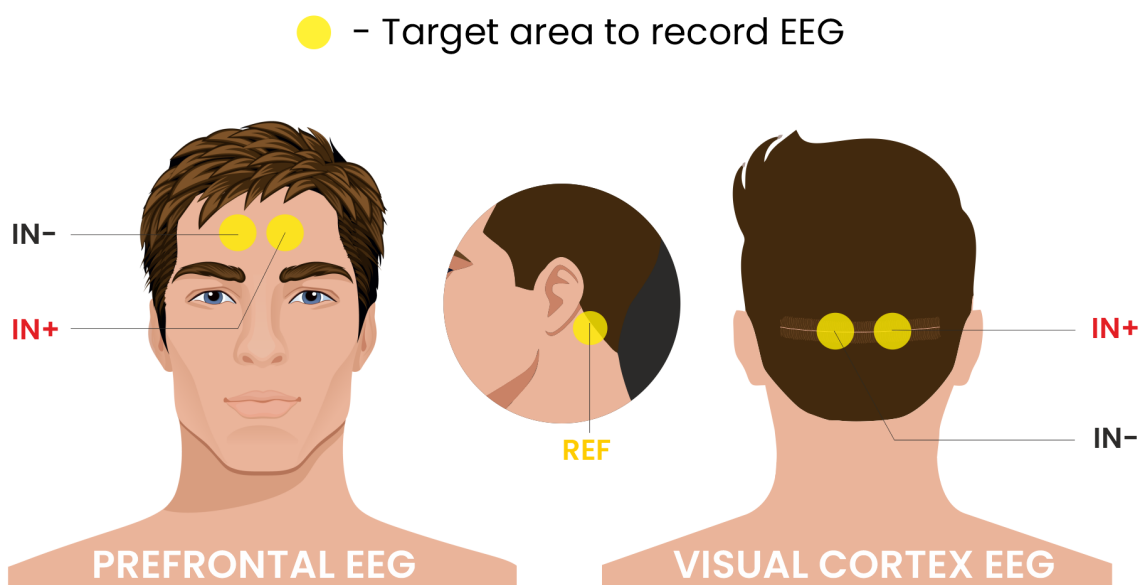


Fig. 4: Target area to record EEG

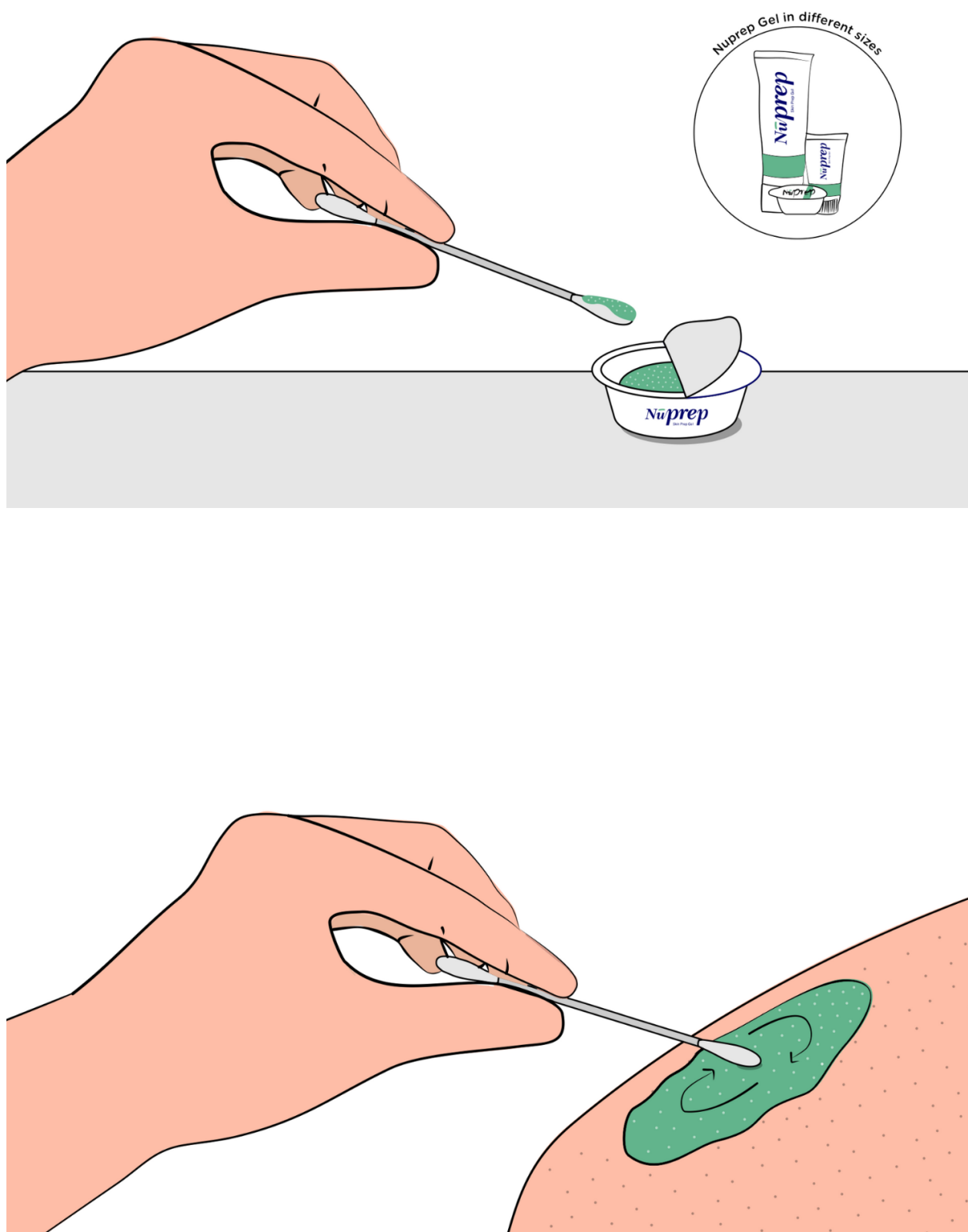


Fig. 5: Rub the gel gently using the cotton swab

### 2.3.4 Step 4: Wipe off the gel

Wipe away excess gel with alcohol swabs or wet wipes.

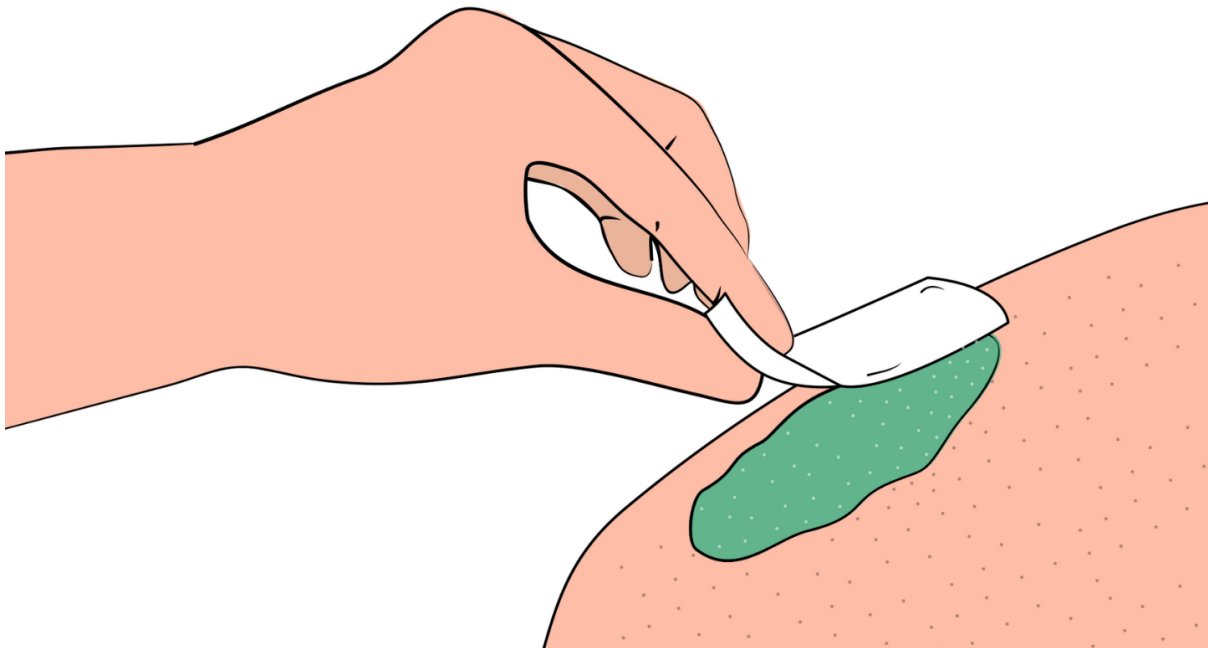


Fig. 6: Wipe away access gel

#### Warning

- Using alcohol swabs can dry out the skin, so don't use them if your skin is already dry.
- Close your eyes while using the alcohol swabs for EOG recording else it may cause eye redness & irritation.

### 2.3.5 Step 5: Measuring the signals

Now you can either use gel electrodes or BioAmp bands for the signal recording.

#### Using gel electrodes

Connect the BioAmp cable to gel electrodes, peel the plastic backing from electrodes and place the IN+, IN-, REF cables according to your specific biopotential recording.

#### Note

While placing the gel electrodes on the skin, make sure to place the non-sticky tab of the electrode in the direction opposite to your hair growth. This allows you to remove the electrodes easily without pulling off much body hair.

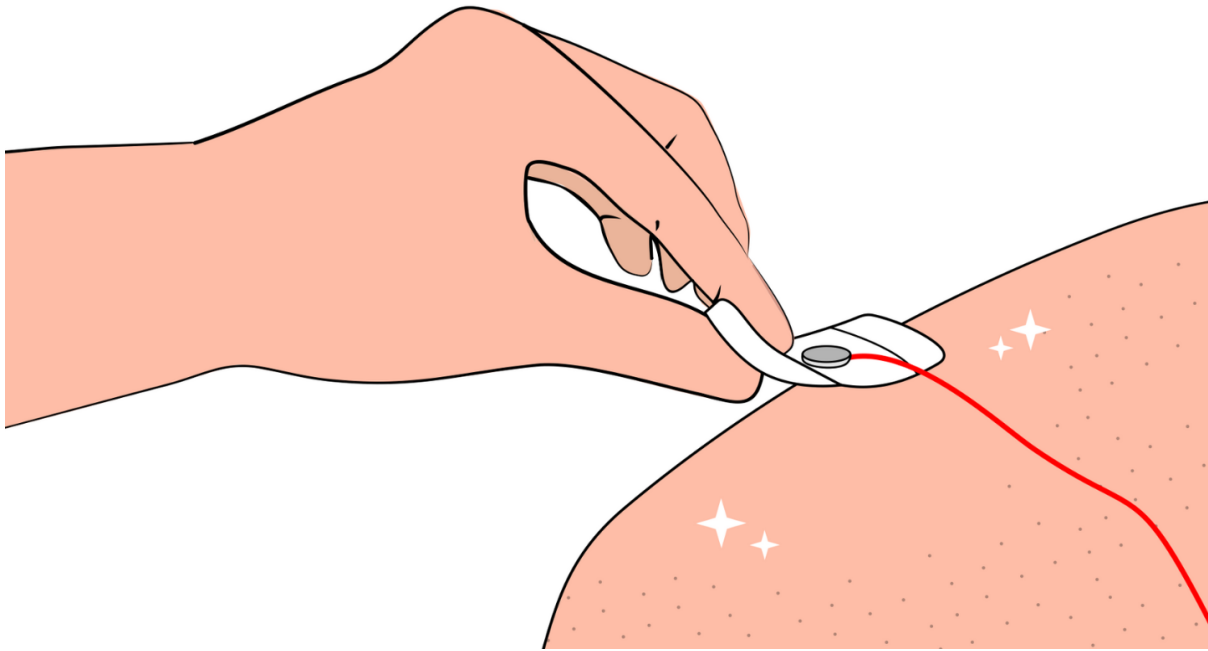


Fig. 7: Placing gel electrodes on skin surface

### Using BioAmp bands

Connect the BioAmp cable to your BioAmp band. Now apply a small amount of electrode gel or Ten20 conductive paste on the dry electrodes between the skin and metallic part of BioAmp cable. This improves the signal conductivity, enhancing overall signal quality.

#### Note

The above graphics demonstrates the use of electrode gel/Ten20 paste with Muscle BioAmp Band. Similarly you can use Brain BioAmp Band and Heart BioAmp Band. Refer to [Using BioAmp Bands](#) guide to assemble and use all the BioAmp Bands correctly.

Now you are all set! Make all the connections correctly and start recording your biopotential signals.

#### Warning

NuPrep gel, Ten20 paste and the alcohol swabs shouldn't be used if you have a history of skin allergies to lotions and cosmetics.

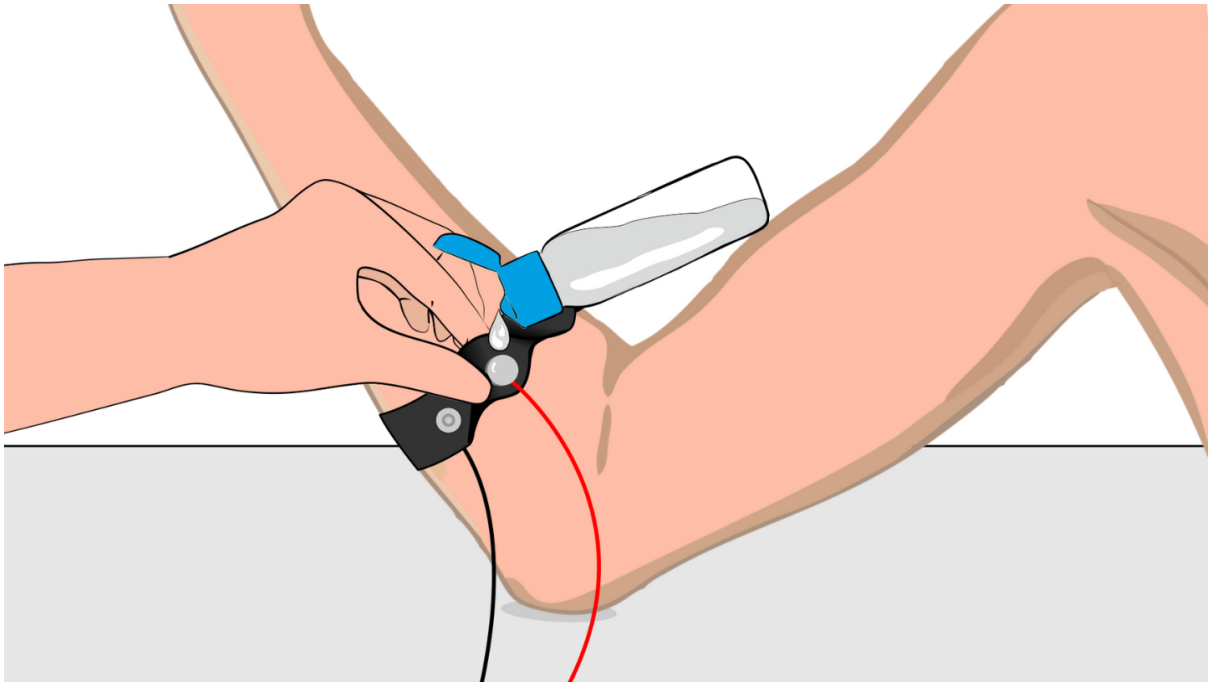


Fig. 8: Method 1: Using Electrode gel

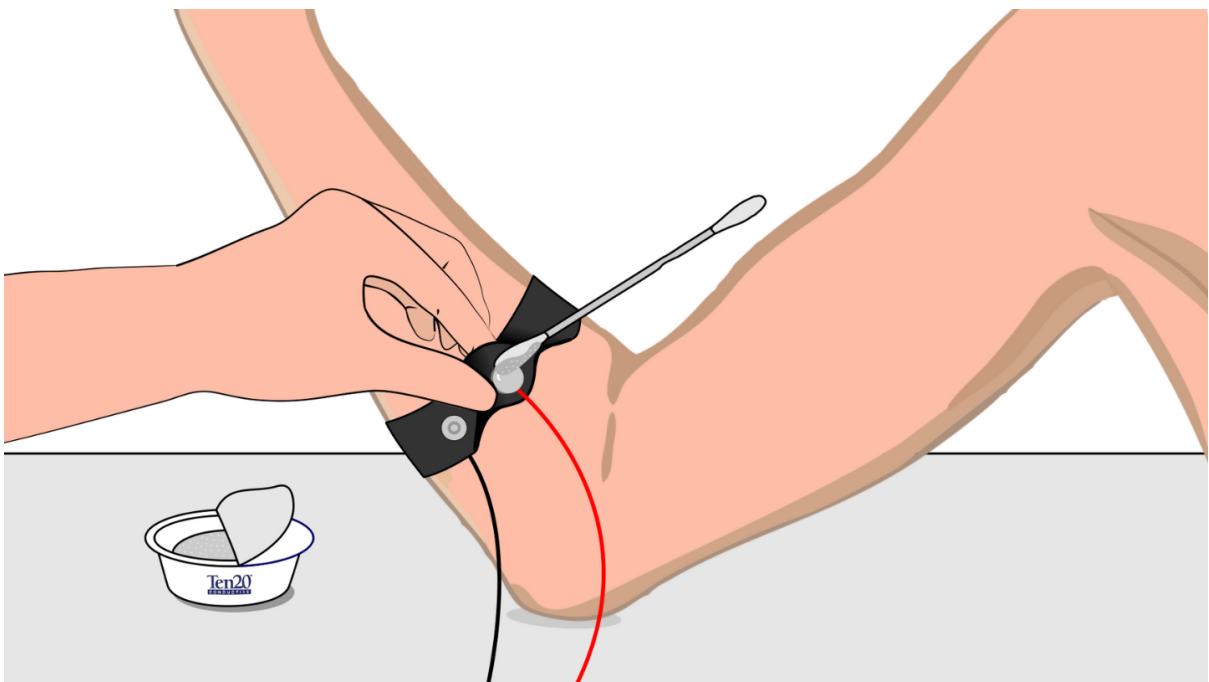


Fig. 9: Method 2: Using Ten20 paste



## USING BIOAMP BANDS

### 3.1 Overview

BioAmp Bands are dry electrode-based stretchable bands that allow you to record biopotential signals from your body, be it from brain (EEG), muscles (EMG) or heart (ECG). These bands can only be used with our BioAmp Hardware by making the connections using BioAmp Cable.

### 3.2 Why use BioAmp Bands?

Usually, people use gel electrodes to record biopotential signals from the skin surface. But, it has its own disadvantages. So we came up with these BioAmp Bands using which users can enjoy a more comfortable, cost-effective, and hassle-free experience while recording biopotential signals.

- **Comfort:** BioAmp Bands are generally more comfortable to wear than gel electrodes, especially for long-term recordings. They conform to the body's shape and avoid the sticky, sometimes irritating sensation of gel electrodes.
- **Reusability:** Unlike gel electrodes, which are often single-use and need to be replaced frequently, BioAmp Bands can be reused multiple times. This makes them more cost-effective and environmentally friendly.
- **Ease of Use:** These bands are easy to wear and adjust, reducing the hassle of setup and ensuring consistent placement.
- **Hygiene:** They can be easily cleaned and sanitized between uses, reducing the risk of skin irritation and infections. Gel electrodes, on the other hand, can leave residue on the skin surface.
- **Performance:** The bands can provide stable and reliable signal recordings depending on your environment conditions. For hot/humid conditions, the bands usually perform better while recording the signals. But if the weather is cold causing dry skin, then it is recommended to prepare the skin properly and apply electrode gel between the metallic part of cable and skin surface. If you feel that the skin impedance is increasing, then reapply electrode gel frequently. The other option is to use gel electrodes after preparing the skin properly.

### 3.3 Types of BioAmp Bands

There are 3 types of BioAmp Bands and all these bands offer targeted and efficient solutions for recording biopotential signals from the muscles, heart, and brain, making them versatile tools for a wide range of HCI/BCI applications.

### 3.3.1 1. Muscle BioAmp Band

Muscle BioAmp Band (EMG Band) is a stretchable band that can be connected to any of our Muscle BioAmp Hardware or any EXG sensor using a BioAmp Cable. It allows you to record your muscle signals hassle-free.



Length	13 inches
Stretchability	2X (Upto 26 inches)
Usability	Reusable as it comes with washable fabric
Interface	Snap electrodes
Compatible Hardware	Muscle BioAmp Hardware or any EXG sensor
BioPotentials	EMG
No. of channels	1
Wearable	Yes

### 3.3.2 2. Heart BioAmp Band

Heart BioAmp Band (ECG Band) is a stretchable band that can be connected to any of our Heart BioAmp Hardware or any EXG sensor using BioAmp Cable. It allows you to record your ECG signals hassle-free.



Length	37 inches
Stretchability	2X (Upto 74 inches)
Usability	Reusable as it comes with washable fabric
Interface	Snap electrodes
Compatible Hardware	Heart BioAmp Hardware or any EXG sensor
BioPotentials	ECG
No. of channels	1
Wearable	Yes

### 3.3.3 3. Brain BioAmp Band

Brain BioAmp Band (EEG Band) is a stretchable band that can be connected to any of our Brain BioAmp Hardware or any EXG sensor using BioAmp Cable to record signals from the brain hassle-free.

Length	15.5 inches
Stretchability	2X (Upto 31 inches)
Usability	Reusable as it comes with washable fabric
Interface	Snap electrodes
Compatible Hardware	Brain BioAmp Hardware or any EXG sensor
BioPotentials	EEG
No. of channels	2 or 6
Wearable	Yes

You can get either a 2-channel or a 6-channel Brain BioAmp Band according to your project or research requirements:

#### 2-Channel Brain BioAmp Band

It can be used to record EEG signals up to 2 channels either from the visual cortex (back of your head) or the prefrontal cortex part of brain.



### 6-Channel Brain BioAmp Band

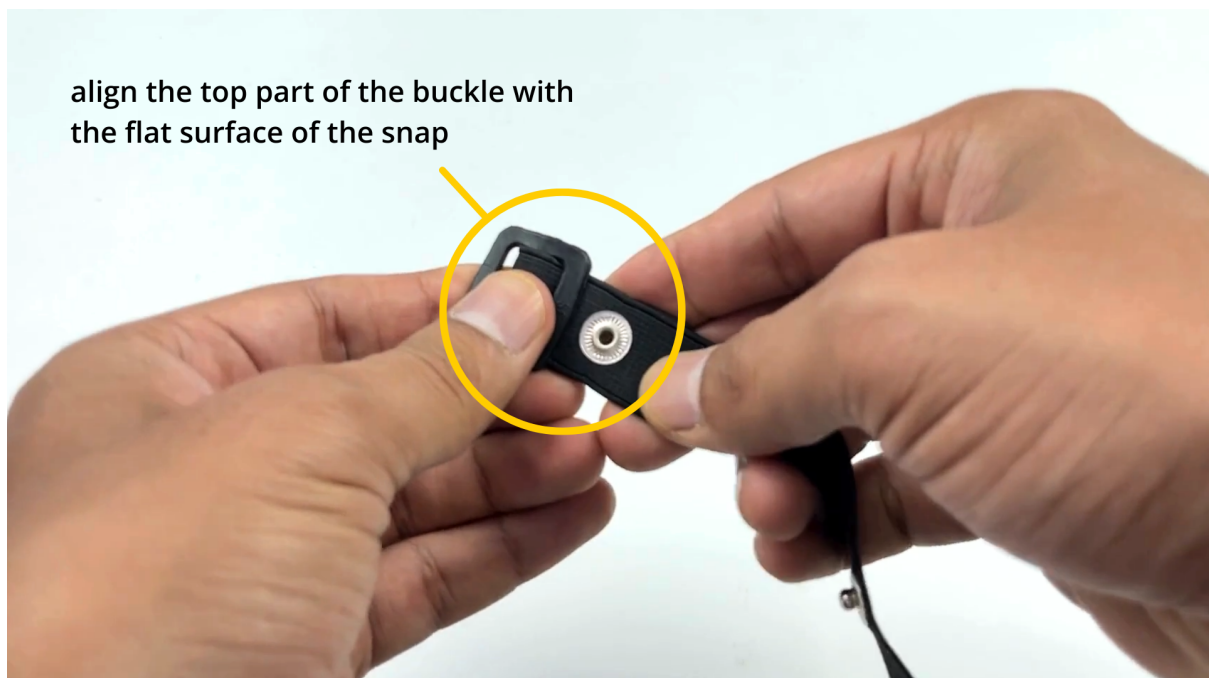
It can be used to record EEG signals up to 2 channels either from the visual cortex (back of your head) or the prefrontal cortex part of brain.



## 3.4 Using Muscle BioAmp Band

### 3.4.1 Assembly

1. Take your Muscle BioAmp Band, hold the side of the band that has buckle on it and align the top part of the buckle with the flat surface of the snap.



1. Take the other end of the band and insert it in the buckle.
3. Your band is now ready to use. You can also adjust the size of the band according to your targeted muscle.

Take other end of the band and  
insert it in the buckle



Insert this end of the band into the buckle  
as shown and pull it to finish the assembly







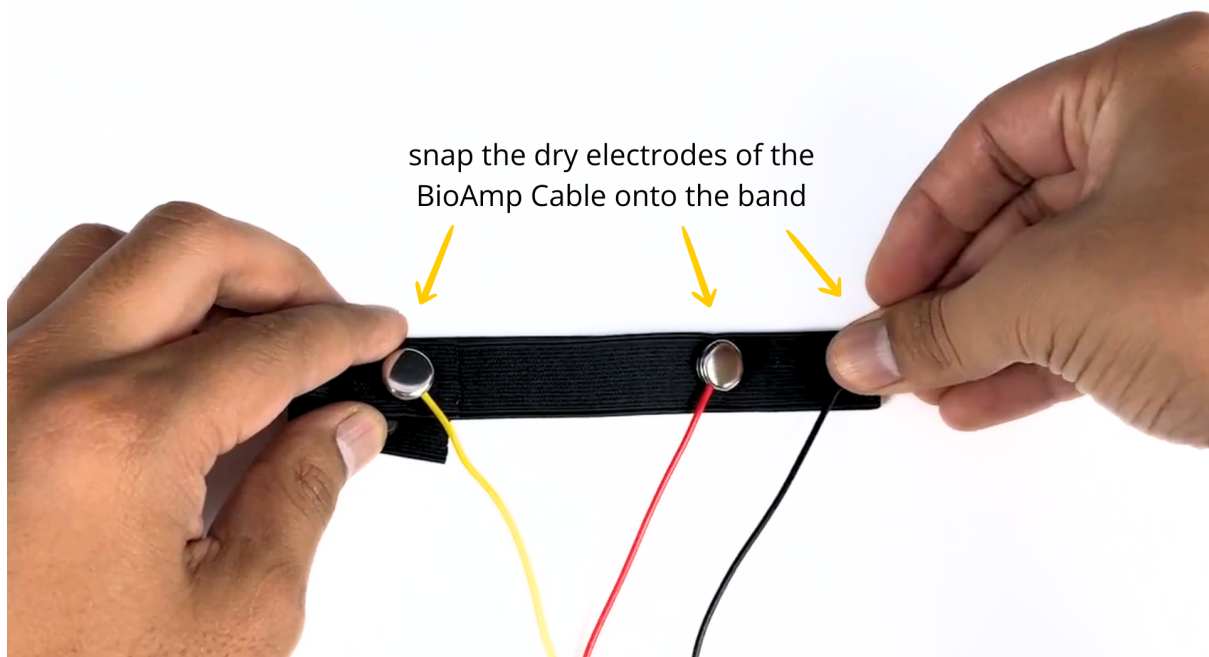
### 3.4.2 Skin Preparation

Apply Nuprep Skin Preparation Gel on the skin surface where dry electrodes would be placed to remove dead skin cells and clean the skin from dirt. After rubbing the skin surface thoroughly, clean it with an alcohol wipe or a wet wipe.

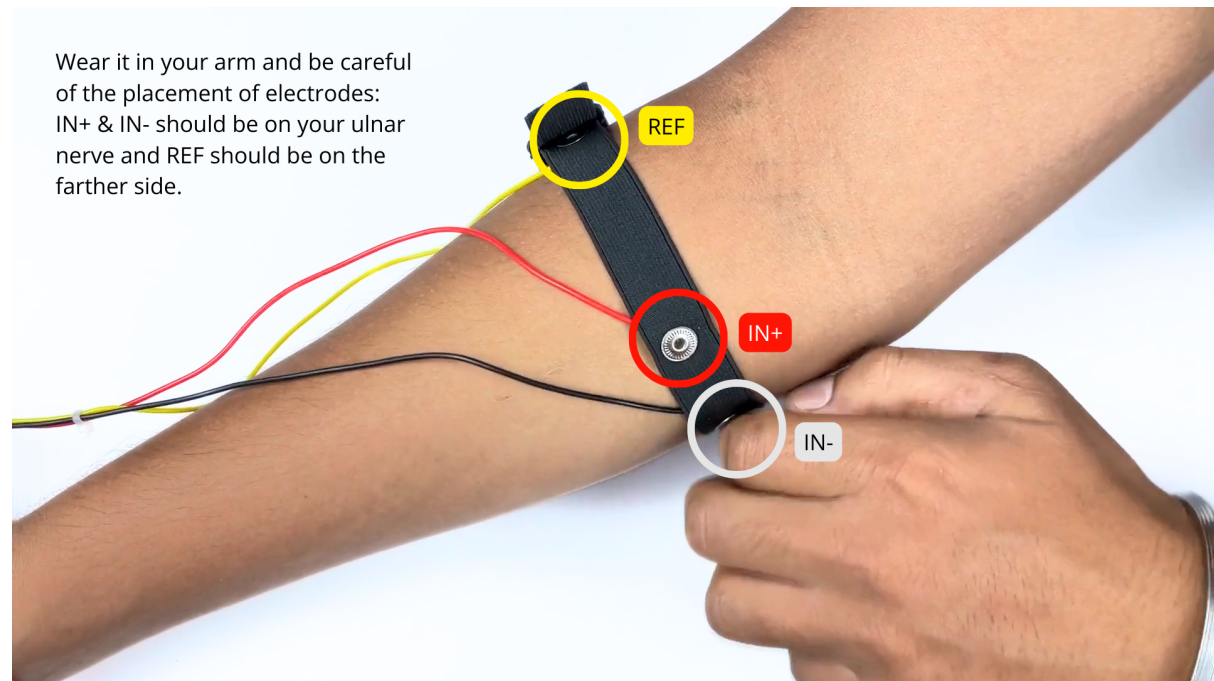
For more information, please check out detailed step by step [Skin Preparation Guide](#).

### 3.4.3 Measure EMG

1. Flip the band and snap the dry electrodes of the BioAmp Cable on it as shown below.



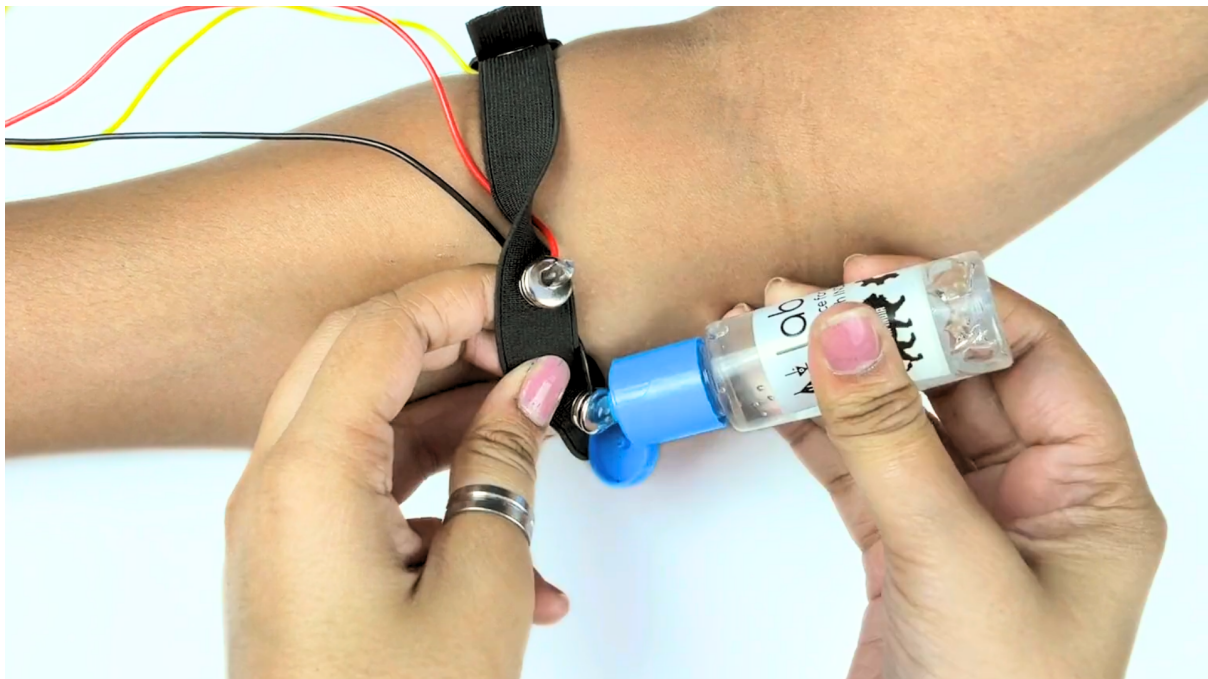
1. Flip the band again and wear it on your arm in such a way that IN+ and IN- are placed on the arm near the ulnar nerve and REF (reference) on the farther side of the band.



### Note

Make sure the dry electrodes (shiny parts of the BioAmp Cable) are in direct contact with the skin.

3. Now put a small amount of electrode gel or Ten20 paste between the skin and dry electrodes to get the best signal acquisition.



**Note**

- After using the band, don't leave the gel residue on the dry electrodes longer than an hour as it may corrode them over a period of time.
- Wash the band with liquid soap and rinse it properly after every use. Use it again only when it is completely dry.

## 3.5 Using Heart BioAmp Band

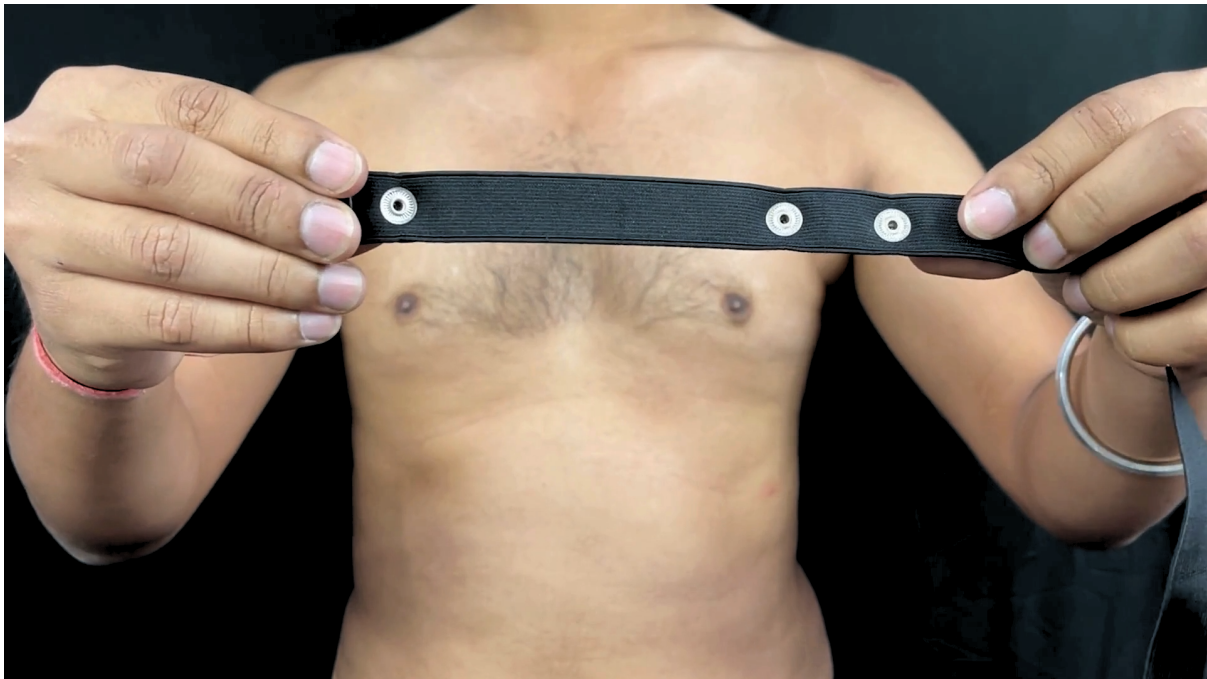
### 3.5.1 Skin Preparation

Apply Nuprep Skin Preparation Gel on your chest where dry electrodes would be placed to remove dead skin cells and clean the skin from dirt. After rubbing the skin surface thoroughly, clean it with an alcohol wipe or a wet wipe.

For more information, please check out detailed step by step [Skin Preparation Guide](#).

### 3.5.2 Assembly

1. Take your Heart BioAmp Band and wrap the band around your chest in such a way that the pointy part of the snap touches your chest and the flat part is on the outer side.



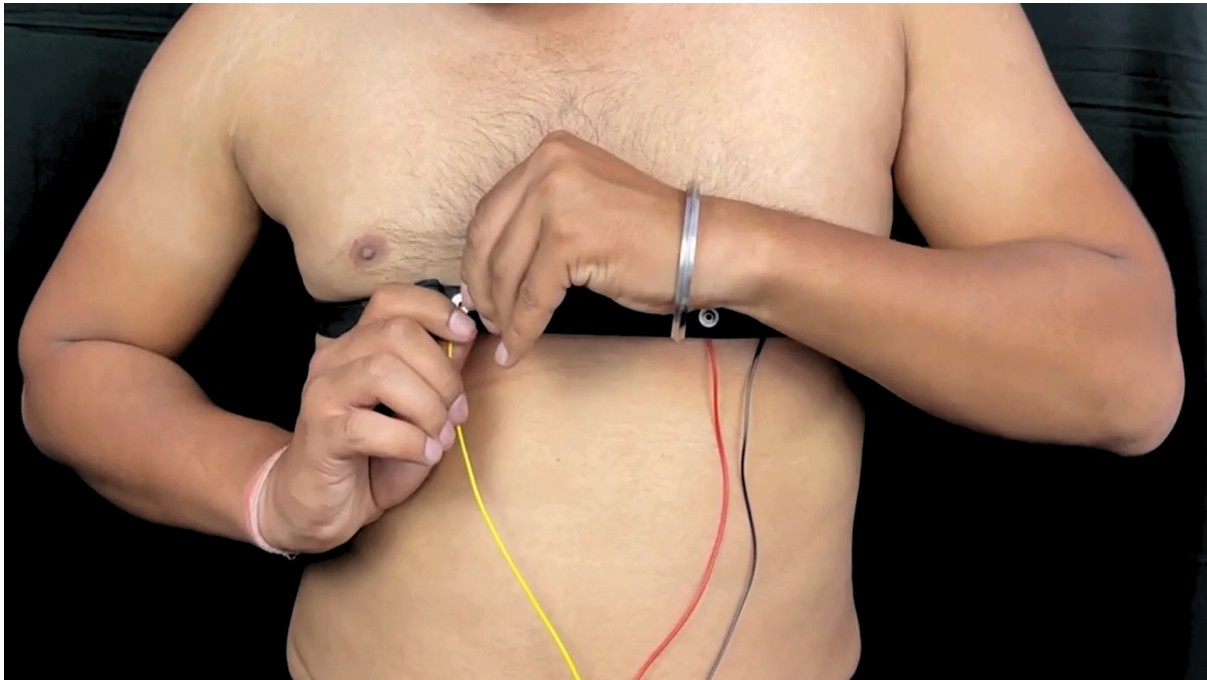
2. Now insert the loose end of the band into the buckle and tighten it by pulling the strap.
3. Your band is now ready to use. You can also adjust the size of the band according to your chest size.





### 3.5.3 Measure ECG

1. Snap the IN- cable on the left most side of the band, IN+ cable in the middle, and REF cable on the right side as shown below.



#### Note

Make sure the dry electrodes (shiny parts of the BioAmp Cable) are in direct contact with the skin.

2. Now put a small amount of electrode gel or Ten20 paste between the skin and dry electrodes to get the best signal acquisition.



### Note

- After using the band, don't leave the gel residue on the dry electrodes longer than an hour as it may corrode them over a period of time.
- Wash the band with liquid soap and rinse it properly after every use. Use it again only when it is completely dry.

## 3.6 Using Brain BioAmp Band

### 3.6.1 Assembly

You get the band in two parts - the longer part consists of buckles at both ends and the shorter one has loose ends on both sides.

1. Hold one end of the longer band and align the top part of the buckle with the flat surface of the snap.
2. Now take the shorter band and insert it into the buckle of longer band.
3. Repeat step 1 and 2 for the other buckle on the longer band.
4. Your band is now ready to use. You can also adjust the size of the band according to your head size.

### 3.6.2 Skin Preparation

Apply Nuprep Skin Preparation Gel on your targeted area (visual cortex or prefrontal cortex) where dry electrodes would be placed to remove dead skin cells and clean the skin from dirt. After rubbing the skin surface thoroughly, clean it with an alcohol wipe or a wet wipe.

For more information, please check out detailed step by step *Skin Preparation Guide*.

### 3.6.3 Measure 1-channel EEG

1. Flip the band, take your BioAmp Cable, and snap the REF cable on a gel electrode. Now snap the IN- and IN+ cable on:
  - Fp1 and Fp2 positions for recording EEG from prefrontal cortex
  - O1 and O2 positions for recording EEG from visual cortex

### Note

The electrode positions mentioned above are according to [International 10-20 system for recording EEG](#).

2. Flip the band again and wear it in a way so that the dry electrodes (shiny parts of the cable) are in contact with:
  - skin surface on the forehead (if recording from prefrontal cortex)
  - scalp surface on the back side of your head (if recording from visual cortex)
3. Peel off the plastic backing of the gel electrode and place it on the bony part behind your earlobe.

**Note**

While placing the gel electrodes on the skin, make sure to place the non-sticky tab of the electrode in the direction opposite to your hair growth. This allows you to remove the electrodes easily without pulling off much body hair.

4. Now put a small amount of electrode gel or Ten20 paste between the skin/scalp and dry electrodes to get the best signal acquisition.